

# Cranberry Artists Network

NEWSLETTER

JULY 2018

## CALL FOR ARTISTS

**Pittsburgh Watercolor Society** celebrates its 73rd anniversary with the **Aqueous Open 2018**. Aqueous Open is the annual international PWS exhibit open to all participants, member or not. The 2018 Aqueous International Exhibition will run October 6 – October 27, 2018 at the Spinning Plate Gallery Pittsburgh, PA. This call for entry is open to any artist 18 or older working in water-based media. Two pieces may be submitted. Over \$5,000 in cash and merchandise awards.

Click [HERE](#) for more info  
Deadline is July 8, 2018

**City of Pittsburgh Art in Parks**  
The Public Art and Civic Design Division (PA+CD) of Pittsburgh's Department of City Planning, on behalf of the Department of Public Works and CitiParks, invites artists to apply for the Art in Parks program. The revolving pilot program will consist of seven small-scale artistic interventions in parks around Pittsburgh. Artists are asked to submit a complete design proposal for a specific park site. Questions can be emailed to [pacd@pittsburghpa.gov](mailto:pacd@pittsburghpa.gov).

Click [HERE](#) for more info  
Deadline is July 20, 2018

**Shadyside... The Art Festival on Walnut Street (Pgh, PA)**  
22nd Annual Howard Alan Show Dates: 8/25/18 - 8/26/18

Click [HERE](#) for more info  
Deadline: 8/22/18

**Martinis with Monet**  
**11 July 2018 7-9pm**  
**AT Cranberry Municipal Center**  
**Art Exhibit & Sale / Live Painting / Music / Food / Meet The Artists / Martinis**  
**Tickets \$15, \$25 for 2 in advance, \$20 ea at the door**  
Cranberry Artists Network

For over 10 years, the Martinis with Monet art exhibition has been the premier art event of Butler County. Cranberry Artists Network is excited to host this event alongside the [Cranberry Township Community Chest \(CTCC\)](#). The Martinis with Monet exhibit will be on display at the [Cranberry Township Municipal Center](#) from June 28th to August 16th, 2018.

Please note that the Opening Reception is a ticketed event and fund raiser for [Cranberry Township Community Chest](#) and that the [Municipal Center](#) will otherwise be closed (including the library) for the duration of the event. All persons wishing to attend the event, including artists, must have a ticket to enter.

We also plan to unveil a commissioned sculpture which will represent the new [Cranberry Library Maker Space](#). The design concept is by CAN member Debra Tobin and is being produced by AJ Howland of [Twisted Iron Fabrication](#) in New Brighton, PA. AJ also produced last year's sculpture.



**CRANBERRY ARTISTS NETWORK  
2018 MID YEAR  
CALENDAR OF EVENTS**

- Jun 29 Martinis with Monet show opens
- Jul Plein Air Painting
- Jul 11 Opening Reception Martinis with Monet
- Jul 12-14 Community Days
- Aug Plein Air Painting
- Aug 16 Martinis with Monet show ends and art pick up, 4-7pm
- Sep Plein Air Painting
- Sep 11 First Tuesday figure drawing
- Oct 3 First Tuesday figure drawing
- Oct 15 New Member Screening 5-8pm
- Nov 8 Holiday show drop off 4-7pm
- Nov 12 Holiday show starts
- Nov 13 First Tuesday figure drawing on second Tuesday because of election day
- Nov 15 Opening reception for Holiday show 6-8pm
- Dec 4 First Tuesday figure drawing
- Dec 6 General Membership Meeting, 6:30-9pm
- Dec 20 Holiday show ends, artwork pick up 4-7pm

**Cranberry Municipal  
BACK HALL GALLERY  
UPCOMING SCHEDULE**

**Martinis with Monet  
June 28 - August 16**

**Shari Finney  
"Art for the Soul"  
August 17 - September 27**

**CAN Plein Air  
September 28 - November 11**

**CAN Holiday Show  
November 12 - December 20**



**JULY FEATURED ARTIST  
JAISON SCHAFER**

Jaison has been creating live event paintings, murals, commissioned portraits, & original artwork throughout Western Pennsylvania for the past 15 years. Jaison holds a Bachelor of Fine Art from the University of Pittsburgh in Studio Art with a concentration in painting. He has since continued to work & study extensively in many mediums & areas of the arts. His artwork can be found in homes, businesses & hotels around the city. Jaison is Owner/Artist of Blue Brush Murals & Design which focuses on custom designed & hand painted artwork on a large scale. He is also Owner/Artist of Live Painting by Jaison ([www.jaisonschafer.com](http://www.jaisonschafer.com)) where he creates artwork live on site at events like Weddings, benefit, parties & more. He also works part time as a Painting Instructor.

Jaison will be teaching two art courses at [Butler County Community College](http://www.butlercountycommunitycollege.edu) this year. They are Advanced Painting Studio - Starting in September and Photoshop for Artists - Starting some-time around Sept or Oct.

Jaison will be creating a live "Monet" painting plus on July 11 from 7-9pm at the Martinis with Monet reception

[www.jaisonschafer.com](http://www.jaisonschafer.com)  
[www.bluebrushmurals.com](http://www.bluebrushmurals.com)



# Cranberry Artists Network

## MEMBER NEWS

**Paul Chmara** reports that the CAN group had a beautiful day of painting and Drawing at Kara's Cottage on June 14. The weather was perfect. They had a barbecued lunch and enjoyed several salads and dessert at the close of their painting experience.

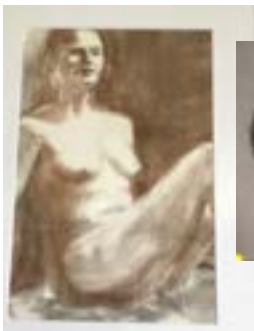


**Plein Air** artists are busy painting each week on Thursday Mornings 9 - 12 or so. If you are interested in Plein air Painting with us email [kbischak@comcast.net](mailto:kbischak@comcast.net) to be included in the notifications each week.

**Debra and James Tobin** have a 17-piece joint show at Sewickley Clearview Bank July 3 - September 5 and Jim has been juried in for the [In the Garden show](#) at Campbell Pottery Stonewall Gallery in Cambridge Springs, PA July 1-29 and the [Westmoreland Art Nationals Arts & Heritage Festival](#) juried exhibition July 5-8.



**Kathy Bischak, Mary Jane Hadley, Holly Pulitzer, Martha Skarlinski, and James Tobin** had artwork accepted for the Pittsburgh Society of Artists Physique Construction of the Human Form Show. Panza Gallery, that ran through June 29.



**Kathy Bischak, Duane Cacali, Mary Jane Hadley, and James Tobin** are among the CAN members who will have artwork on display at the Pittsburgh Society of Artists - Artist's Choice Exhibition from July 5 through August 3, 2018 at the Brew House in Pittsburgh. Opening reception Friday, July 6, 2018: 6-8pm.

## Zentangle Workshop at Gilberti Fine Art

Zentangle With [Jan Steinle, CZT](#)  
Wednesday, 8/1 6:30 - 8:30pm  
\$35 (+ \$10 Materials Fee)

Zentangle® is an easy-to-learn, relaxing and fun way to create beautiful images by drawing structured patterns. With only a pen and pencil on fine art paper, you will learn to create your own intriguing abstract works of art. All ages and skill levels will be empowered and uplifted as they learn the steps of a method that promotes mindfulness, enhances focus, fosters relaxation, and increases expression of personal creativity. Create Zentangle art and have fun in the process - a great starter class bound to leave you thirsty for more!

Register here:  
<http://gilbertifineart.com/>

## MILLVALE PUBLIC ART TOUR

On July 28, 2018 from 12 pm to 1 pm, the Office of Public Art will host an hour-long tour will begin at St. Nicholas Croatian Catholic Church, where visitors will see the striking murals completed by Croatian artist Maxo Vanka during the late 1930s and early 1940s. After, participants will walk to the Millvale Community Library to learn about Pages, a sculpture by artist James Simon, and other works housed within the library. The tour will also feature Millvale's newest public artwork, Watermark, by artist Ann Tarantino. Visible as a blue line throughout Millvale, the work includes an installation piece in GAP Park.

Buy tickets [HERE](#).





## MEMBER NEWS continued

### Our Mission

Cranberry Artists Network was organized by artists to promote an awareness about the value of the arts. Our mission is to build a vibrant appreciation for the arts by connecting artists and their skills with the community.

### Contact

[@CranberryArtistsNetwork](mailto:@CranberryArtistsNetwork)

[cranberryartistsnetwork@gmail.com](mailto:cranberryartistsnetwork@gmail.com)

[www.CranberryArtistsNetwork.com](http://www.CranberryArtistsNetwork.com)

### General Information

A members-only page is available at <https://www.facebook.com/groups/CranberryArtistsMembers/>, or search for CAN Members

### Cranberry Artists Network Board

Noele Reynolds President

James Tobin Vice President

Shari Finney Secretary

Marcy Bogdanich Treasurer

### CAN Chairs

Vickie Schilling Exhibition

Mary Mason Programs

Mary Jane Hadley Membership

Kathy Bischak Publicity

Debbie Tobin Newsletter

Colin Richards Website

Elise McVeigh Technology

Duane Cacali Founding Member Emeritus

Please send newsletter submissions to Deb Tobin, [debratobin@ymail.com](mailto:debratobin@ymail.com).

### CAN Photographers

T.J. D'Andrea is judging interest in getting together as a group for photo shoots, tech talk, software usage, etc. Please contact him and we will see where it goes. T.J. D'Andrea [706 Photography and Photo Restoration](mailto:tjd706photo@gmail.com) [tjd706photo@gmail.com](mailto:tjd706photo@gmail.com)

CAN Member **June Kielty** had one of her pieces chosen for the cover of Lesbian Connection magazine. The title of the piece is "A Gay Schizo Affective Woman's Dream". It's a symbolic piece where all the people come from stars and change into the different nationalities as they come through the clouds and all dance on earth getting along with love.



**Bette Dengel** will be attending the [Colored Pencil Society of America](#) annual conference in Chicago from August 1 to 3 and taking 2 all day classes there.

**Kathy Bischak, Mary Jane Hadley and BJ Wettach** have come together to share their recollections of people, places, and things that have inspired them to paint in their three-artist show *Recollections*. Show dates August 12 - September 2. Opening reception August 12, 2-4pm. Merrick Art Gallery, 1100 Fifth Ave, New Brighton, PA.



**Carol Scheftic** has sixteen (yes, 16!) pieces on display in the Instructors Show at the [Artsmiths of Pittsburgh](#), in Mt. Lebanon through Sunday, July 8.

The Artsmiths is just one of the venues where Carol teaches how to use powder metallurgy techniques to create jewelry and other small adornments in silver, bronze, steel, and other metals. At Artsmiths, she is offering one workshop each month this summer. Closer to Cranberry, she has sessions on the current schedule at the [North Hills Art Center](#) and the [Appalachian Rock Shop & Jewelry Emporium](#). She also welcomes students to her studio at the [Wilkins School Community Center](#) in Regent Square. Carol also tries to schedule an open house in her studio each month.



More information is available:

[On open house / studio sessions \(with monthly date & time details\):](#)

[On workshops \(including registration contacts & deadlines\):](#)

[On Carol's show schedule, notes for students & peers, other events, musings](#)