

Cranberry Artists Network

NEWSLETTER

NOVEMBER 2018

CALL FOR ARTISTS

North Hills Art Center

Upcoming Call for Artists

NOVEMBER: **Holiday Artisan Market** (open to all, no theme)

Call 412-364-3622 for details.

Artists Call

General Instructions

Butler Art Center

Annual Arts and Crafts Show

December 5 - 29, 2018

(Super Sale Dec. 27-29)

All entries welcome

Annual Arts and Crafts show during the month of December.

Ideal for smaller, lower cost items for people shopping for Christmas gifts.

Westmoreland Art Nationals

Juried Fine Art & Photography Exhibit

Now Accepting Entries for 2019

Westmoreland Art Nationals

2019 WAN Entry Form and Rules

Postmarked Deadline March 1,

2019.

LOOKING BACK



Cranberry Area Council for the Arts
Seventh Annual Juried Exhibition news clipping from August 1997. [Marian Sallade](#) was the Juror's Award recipient for her piece "Grandson of the Hawk"



to register for the Cranberry Artists Network “The Holiday Show”

November 9 - December 20

Opening Reception: Thursday, November 15, 2018 6:00-8:00 p.m.

Join us for our last members show of 2018, a gallery full of art and holiday cheer!

- The Exhibition Space: Cranberry Township Municipal bldg, 2525 Rochester Rd, Cranberry Twp, PA 16066.
- Theme: There is no specific theme for this show.
- Sales: Cranberry Artists Network will conduct all sales during the exhibition. Artists retain 80% of the sale
Cranberry Artists Network retains the right to use art images for any promotional materials.
Disclaimer: Cranberry Artists Network and the Cranberry Township Municipal Center will take precautions to prevent damage to artwork, but will not be held responsible for any damage.
- Entry Fee: There is no entrance fee for this show.
- Entry Regulations: Only current CAN members in good standing may enter the show.
- Artists are permitted to submit only one piece of art for entry in any medium (except film or video and installations).
- Artwork must have been produced within the last 3 years and not have previously been shown in Cranberry Township.
- Artwork must be priced at \$200 or less.
- 2-D works must be professionally presented and ready to hang. No sawtooth hangers, picture wire only.
- 3-D works must be exhibit ready.
- Size limitations –16” x 20” portrait or landscape.

Please note: these dimensions are absolute, artwork wider than 16” or taller than 20” will be rejected.

Please note: These dimensions must include the frame for paintings. The dimensions will also apply for sculptures, ceramics, pottery and tapestries. Any artwork that does not comply will be rejected.

Digital registration only.

All applicants must register online via the Cranberry Artists Network online form

<https://www.cranberryartistsnetwork.com/holiday2018>

by Tuesday, Nov. 6, 2018, 11:59 p.m.

Accepted artwork must be dropped off to be hung on Thursday, Nov. 8 between 4 and 7 pm at the Municipal Center.

Deadline for entries Tuesday, Nov. 6, 2018, 11:59 p.m.

**CRANBERRY ARTISTS NETWORK
2018 CALENDAR OF EVENTS**

- Nov 8 Plein Air show pick up
4-7pm
- Nov 8 Holiday show drop off
4-7pm
- Nov 12 Holiday show starts
- Nov 13 First Tuesday figure drawing
on second Tuesday because
of election day
- Nov 15 Opening reception for
Holiday show 6-8pm

- Dec 4 First Tuesday figure drawing
- Dec 6 General Membership
Meeting, 6:30-9pm
- Dec 20 Holiday show ends, artwork
pick up 4-7pm

**Cranberry Municipal
BACK HALL GALLERY
UPCOMING SCHEDULE**

**CAN Plein Air
October 2018**

**CAN Holiday Show
November 2018**

**CAN New Members Show
January 2019**

**Dee Grieb
February 2019**

**Colleen Tittiger
March 2019**

**Kathy Bischak
April 2019**

**Carmen Blanco
May 2019**

**Gayle Shubert
June 2019**



**NOVEMBER FEATURED ARTIST
JOSEPH PETRY**



What makes a photograph extraordinary? I believe it is about using composition, perspective, lighting, color, and texture to infuse a moment of time deep into my viewer's consciousness; leaving the viewer changed for having viewed my art and me changed for having created it.

My photographic journey has taught me – that “less is more” yet “small is big.” I start with a theme, then incorporate place, time, perspective into a holistic composition. Then I wait until the lens captures the emotions of that inspired moment. Next, I retire to my digital darkroom sometimes for days on end where my obsession with details explodes into a completed emotional moment. My final challenge is to translate that digital moment in time into a physical, enduring work of art that will touch the soul-time and time again.

I find my artwork and the creative process personally cathartic and emotionally peaceful. My greatest joy comes when we together experience that shared moment in time.

www.josephpetry.com
jpetry@josephpetry.com



Cranberry Artists Network

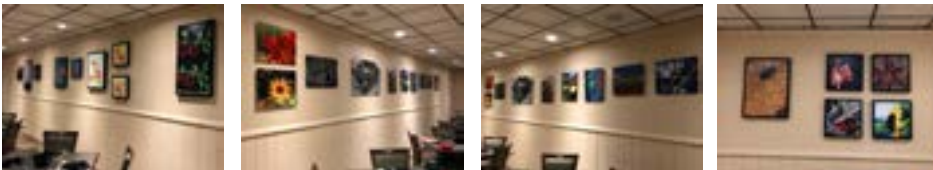
MEMBER NEWS

Welcome to our newest members **Carla Baldwin, Dave Hawbaker, Frances Hawbaker, [Monica Hietsch](#), [Gina Judy](#), [Alicia Stankay](#), [Joan Stossel Pun](#), and [Susan Walker](#)** who were selected during our October membership screening.



[Debra](#) and [James Tobin](#) have their artwork on display at the following:

- **Cranberry Artists Network Holiday Show**, Nov. 8 - Dec. 20, Cranberry Twp Municipal Complex, 2525 Rochester Road, Cranberry Twp, PA 16066. Opening reception Thursday, November 15th, 6-8 pm. Public Welcome. Monday -Friday 7:30am- 5 pm, Closed Saturday and Sunday.
- **North Hills Art Center Holiday Artisan Market**, Market Dates: Nov 17- Dec 8 (Mon- Sat, 10am- 3pm)
- **Tabula Rasa Joint Show** - thru Nov. 30, 318 New York Ave, Rochester, PA. Public Welcome. Tabula Rasa is looking for artists for monthly solo/group shows. Contact Joseph Paul at Tabula Rasa directly if interested.



[Nina Sowiski](#) will have a table with matted photographs, photo cards and some smaller framed pieces at the Edgewood Holiday Market on Saturday, December 8 from 9am to 6pm, in the Edgewood Library, 1 Pennwood Ave, Edgewood, Pa.

3D Art Exhibits - We now have been given permission to use the glass case at the entrance of the Back Hall Gallery to feature ongoing 3D art exhibits. Show details coming soon. Contact person Mary Mason.

Congratulations to CAN member, **[Martha Hopkins Skarlinski](#)** in acceptance in the Associated Artists of Pittsburgh 106 Annual Exhibition. The show ran through October 27 in the AAP Exhibition Space in the Southside Works.

[Carol Scheftic](#) will be participating in the **[Sweetwater H*oliday mART](#)** (Sewickley), **[North Hills Art Center Holiday Artisan Market](#)** (Ross Twp) and the **[Hoyt Center for the Arts Holiday Open House](#)** (New Castle). Carol will also hold holiday-season Open Houses at her studio, in the Wilkins School Community Center (Regent Square), on Saturday, Nov 10, from 1 to 5 pm, and on Saturday, Dec 15, from (at least) 11 am to 5 pm. She offers: art jewelry in silver, bronze, steel, and copper; miniature pottery for your faerie garden, dollhouse, or train set; and colorful glass ornaments with flat bottoms so they can also serve as card-or picture-holders. Can't make it to her Open Houses? Carol's art jewelry is regularly available at **[The Artsmiths of Pittsburgh](#)** (Mt. Lebanon, PA), the **[Hoyt Center for the Arts Gift Shop](#)** (New Castle, PA), and **[Portage Hill Gallery](#)** (Westfield, NY).



April 24 – 28, 2019

The Plein Air Convention & Expo is the world's largest plein air event. It's like the Woodstock of outdoor painting. By attending the 2019 Plein Air Convention, you'll make personal connections with 80-plus of the world's top painters (our faculty), plus 900 of your peers, and you'll discover amazing techniques to transform your painting skills. We'll have painting demonstrations on four stages, plus each day we'll go out painting and break the world record for the most plein air painters painting in one place simultaneously.

The event takes place in San Francisco, California, April 24-28, 2019. There is an optional 1 1/2 day pre-convention workshop with leading artist Joseph McGurl (April 23), plus an art show and more. All events will take place at the host hotel.

For the workshop supplies list, click [here](#).

QUESTIONS? Call Leslie Baldwin (412) 720-7380

[Registration](#)

Our Mission

Cranberry Artists Network was organized by artists to promote an awareness about the value of the arts. Our mission is to build a vibrant appreciation for the arts by connecting artists and their skills with the community.

Contact

[@CranberryArtistsNetwork](https://www.facebook.com/CranberryArtistsNetwork)

cranberryartistsnetwork@gmail.com

www.CranberryArtistsNetwork.com

General Information

A members-only page is available at <https://www.facebook.com/groups/CranberryArtistsMembers/>, or search for CAN Members

Cranberry Artists Network Board

Noele Reynolds	President
James Tobin	Vice President
Shari Finney	Secretary
Marcy Bogdanich	Treasurer

CAN Chairs

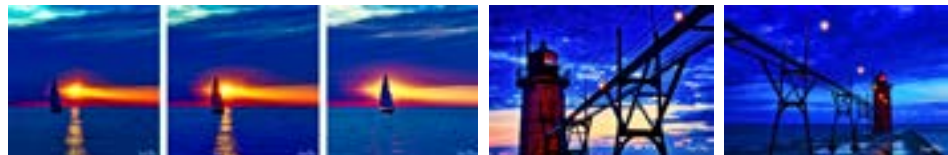
Vickie Schilling	Exhibition
Mary Mason	Programs
Mary Jane Hadley	Membership
Kathy Bischak	Publicity
Debbie Tobin	Newsletter
Colin Richards	Website
Elise McVeigh	Technology
Duane Cacali	Founding Member Emeritus

Please send newsletter submissions to newsletter@cranarts.com

Cranberry Artists Network

MEMBER NEWS

[Joseph Petry](#) 's photographs remain on display through November 10th in the [Associated Artists of Butler County, Invitational Art Show](#)



Open Studio Model Sessions Join us the Second Tuesday of November (due to Election Day) and enjoy a relaxing evening with artists, 6 - 8 p.m. at the Cranberry Municipal Building. Each person needs to bring \$10 and whatever art materials (including easels). We supply the snacks, model, music, lighting. We welcome members and non-members. Models will be clothed. No drawing in December because of the December general meeting.



Plein Air artists are busy painting each week on Thursday Mornings 9 - 12 or so. If you are interested in Plein air Painting with us email kbischak@comcast.net to be included in the notifications each week.

[Dianne Bauman](#), [Ann Bealer](#), [Sandra Beitsinger](#), [Kathy Bischak](#), [Elizabeth Asche Douglas](#), [Marge Gardner](#), [Diane Grguras](#), [Mary Jane Hadley](#), [Jan Jay](#), [Peg Lombardi](#), [Mary B. Mason](#), [Carolyn Parker](#), [Marian Sallade](#), [Jaison Schaffer](#), [Clare Torso](#), [Joanne Vennetti](#), and [Patricia Young](#) will have work on display for the CAN Plein Air Show from Oct. 1 - Nov. 8 in the Back Hall Gallery.

[Lorrie Minicozzi](#) has an upcoming show at Nemaquin Woodlands Resort. The January 1, 2019 Artist Exhibit: "Animals" will feature Lorrie, two local artists and a bunch of furry friends.



The **December 6 General Meeting** will feature a wood carving demo by CAN member **Tom Nadolny** and a presentation of new exciting project opportunity.